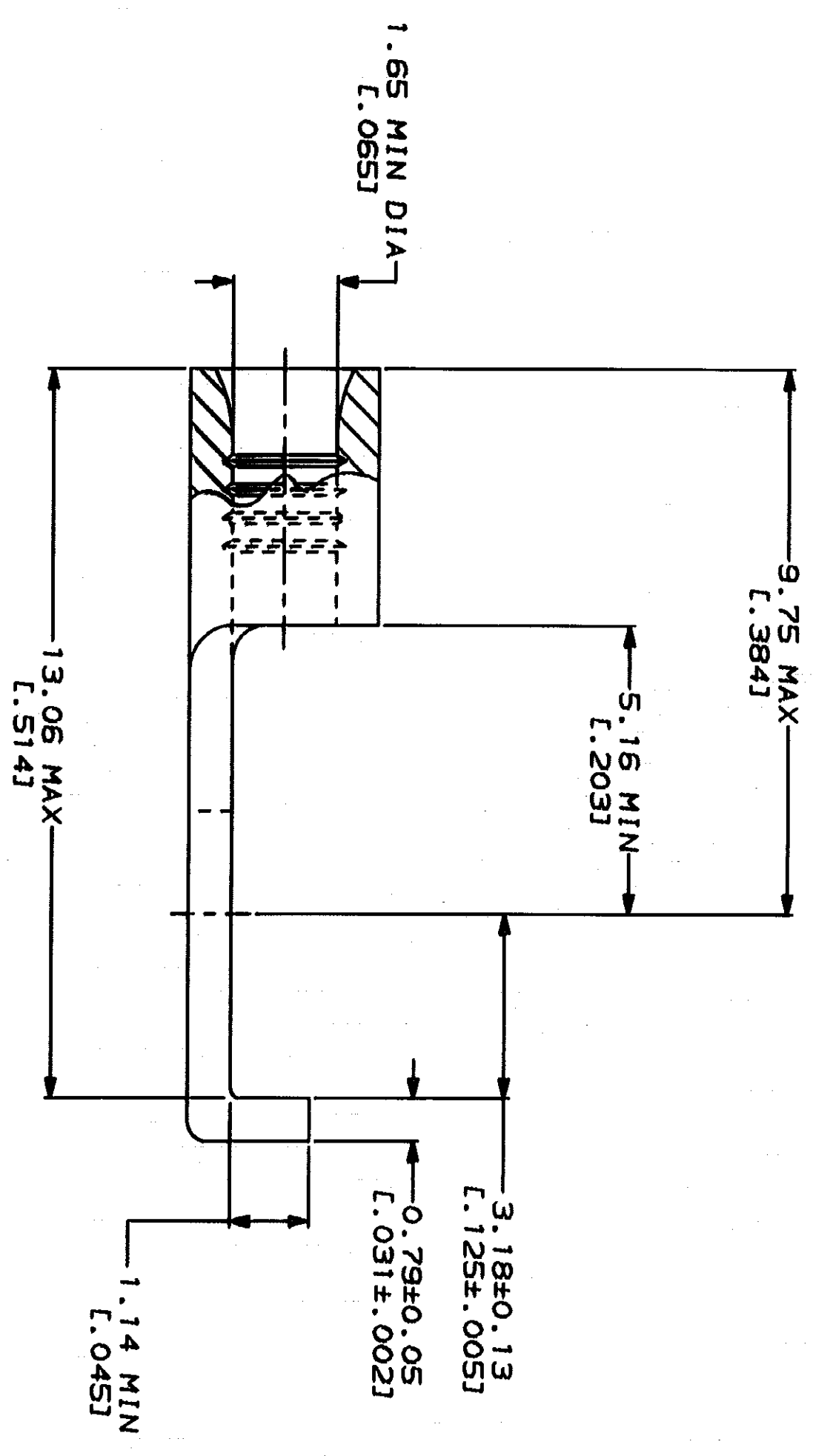


**METRIQ**  
DIMENSIONS LISTED IN mm [ INCHES ]

AMP WIRE RANGE	E13288 Listed
22-16 AWG STRANDED	22-16 AWG STRANDED
LR7189 Certified	MILITARY P/N AND CLASS
NOT CERTIFIED	NOT APPLICABLE

△ STAMP AMP 22-18\* APPROX AS SHOWN  
22-16 TERMINALS ARE STAMPED 22-18 IN ACCORDANCE WITH MILITARY SPECIFICATION MIL-T-7928, COMMERCIAL WIRE RANGE IS 22-16



QUANTITY	STUD SIZE	H	PACKAGING TYPE	PART NO
5000	8	4.34±0.08 [L.171±.003J]	1-32418-2 ON TAPE	1-32418-4
---	8	4.34±0.08 [L.171±.003J]	LOOSE PIECE	1-32418-2
---	6	3.68±0.08 [L.145±.003J]	LOOSE PIECE	32418

AMP INCORPORATED  
CUSTOMER SERVICE SYSTEMS

FOR ADDITIONAL PRODUCT INFORMATION OR COPIES OF DRAWINGS AND TECHNICAL DOCUMENTS  
1-800-522-6752

FOR APPLICATION TOOLING INFORMATION  
1-800-722-1111

FOR ORDER ENTRY  
1-800-526-5142

MAX RECOMMENDED OPERATING TEMPERATURE: 170°C MAX

VOLTAGE RATING: NOT APPLICABLE

WIRE CROSS SECTIONAL AREA RANGE: 0.26-1.65mm<sup>2</sup> [509-3,260] CIR MILS STRANDED

FINISH: TIN PLATE  
0.00254[L.000100] MIN THK PER MIL-T-10727

DO NOT SCALE PRINT. UNLESS SPECIFIED DIMENSIONS IN - - - - - INCHES - - - - - TOLERANCES ON: 1 2 PLC DEC ± 3 PLC DEC ± ANGLES MATERIAL COPPER PER ASTM B-152 ANNEALED

DR 3-2-93 TA BRINKMAN  
CHK 3-2-93 DA PATTERSON  
APPD 3-2-93 DE MILLER  
APPD 3-2-93 JL MCKALEY  
PRODUCT SPEC

APPLICATION SPEC

WEIGHT

AMP Incorporated  
Harrisburg, PA 17105-3508

TERMINAL, FLANGED SPADE, BUDGET

SIZE: 00779  
SCALE: 10:1

DRAWING NO: 32418  
SHEET: 1 OF 1

CUSTOMER DRAWING